



# HOW TO TAKE CARE OF YOUR SAAKO?

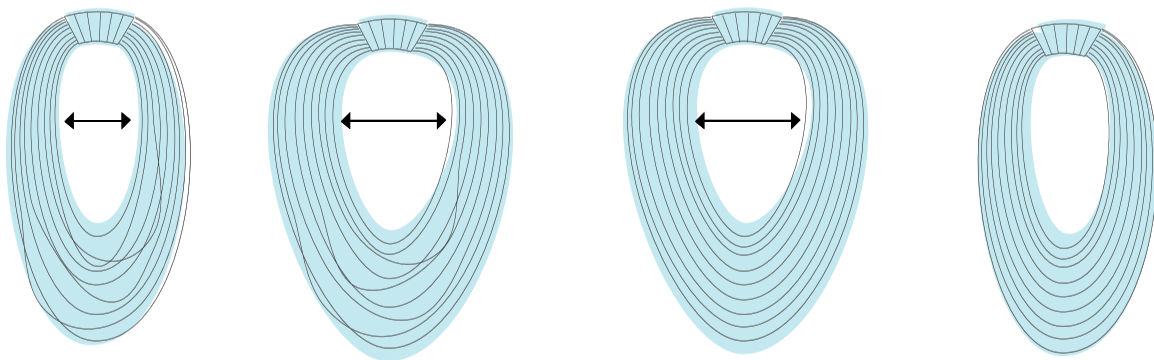
## 01

Our creations are delicate and easy to take care of.

### What if the necklace is tangled?

When the necklace becomes tangled, there is an easy, quick-fix solution.

Hold the top end of the necklace; then place both hands inside the neck gap. Separate your hands so the necklace begins to stretch and fan out. You will then see which strands have become tangled. Most often, all it takes is the repeated action of 'opening and closing' the necklace with you hands to untangle the fabric.



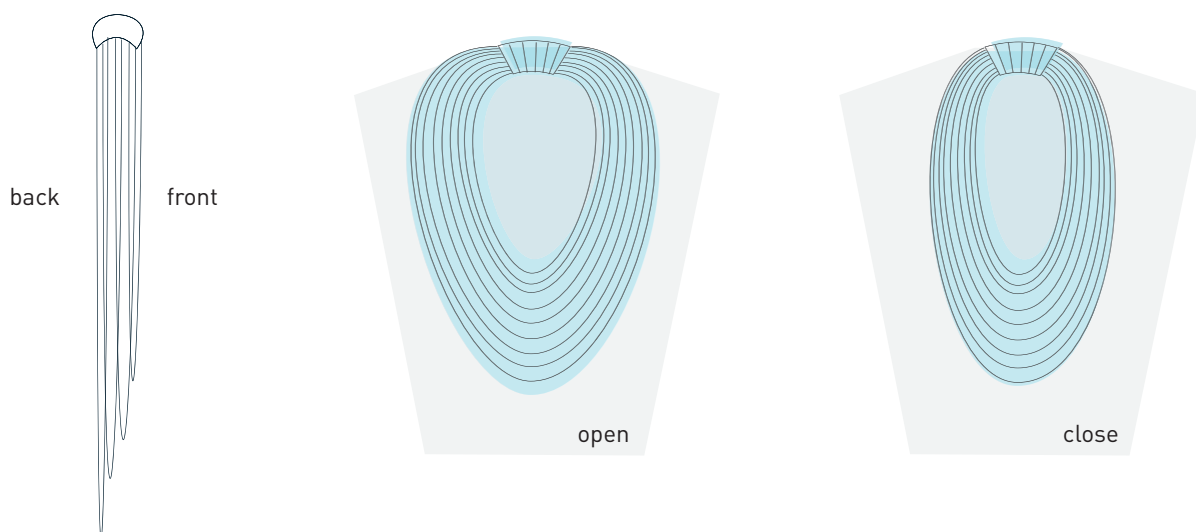
## 02

### How to wear your saako's necklace?

The classic Summer/Fall necklace has a front and a back.

You must recognize the rear of the necklace before putting it on. This is distinguished by the longer loops of fabric. This side should be placed over your head first – the shorter strands should be on top once around the neck.

Once you have the necklace on, wear as you like – wide around the shoulders or long and narrow down the chest.





## HOW TO TAKE CARE OF YOUR SAAKO?

03

### How should i wash my saako?

THIS NECKLACE SHOULD BE WASHED CAREFULLY.

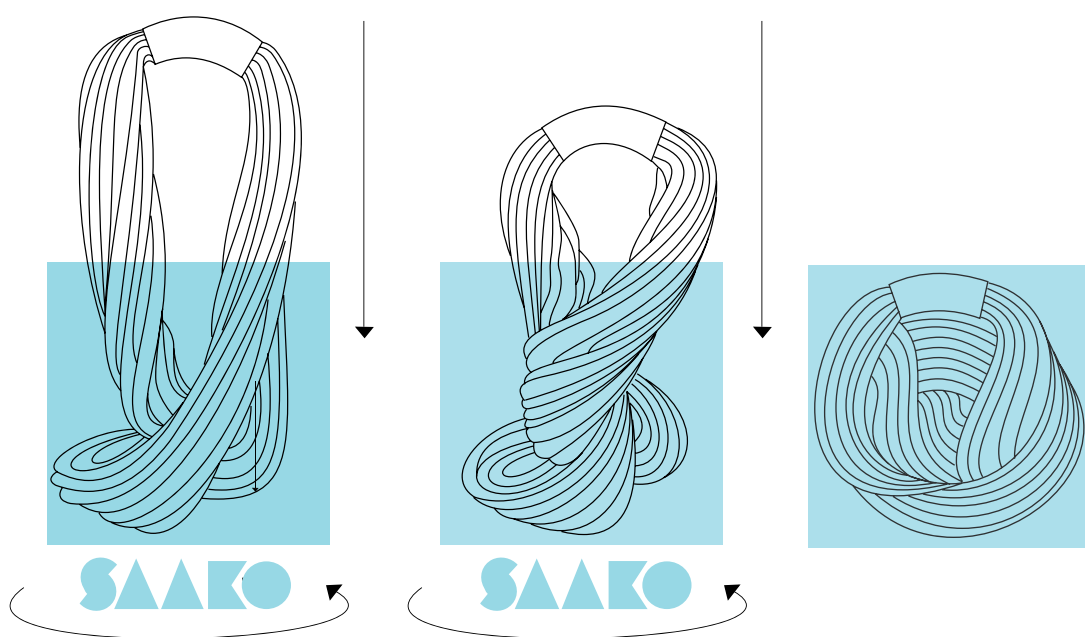
It is a delicate – we recommend using a bag suitable for washing bras. When cleaning, the bag should have little empty space - so pack the necklace along with some other items. Always wash max. 85° F / 30 ° C.



04

### How to put my saako in the box?

Placing a necklace in box is easy. Holding the necklace from the tied top-end, twist the necklace (bottom-end first) into the container. While spiraling the necklace into the box (twice around is enough) gently compress the necklace into the box.

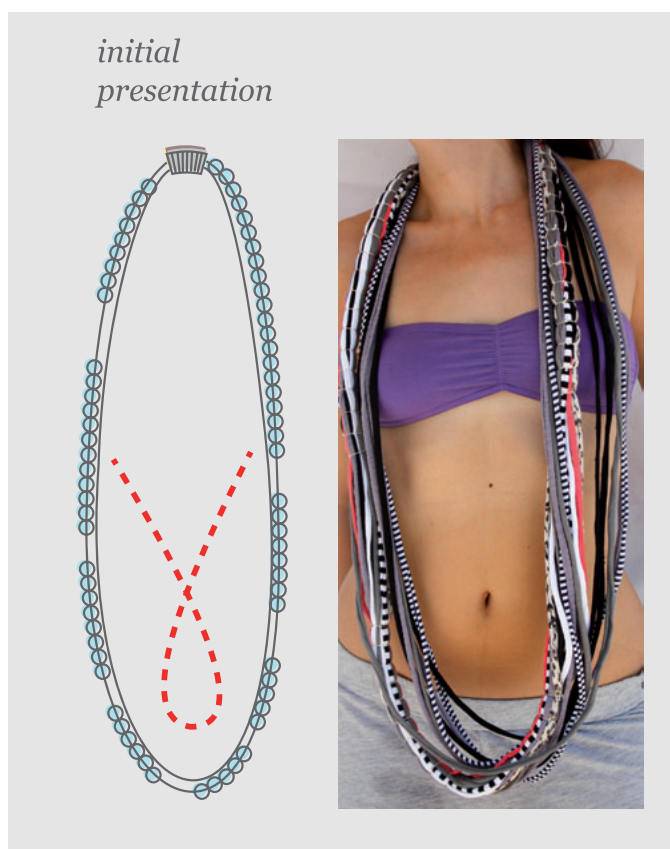


# HOW TO TAKE CARE OF YOUR SAAKO?

05

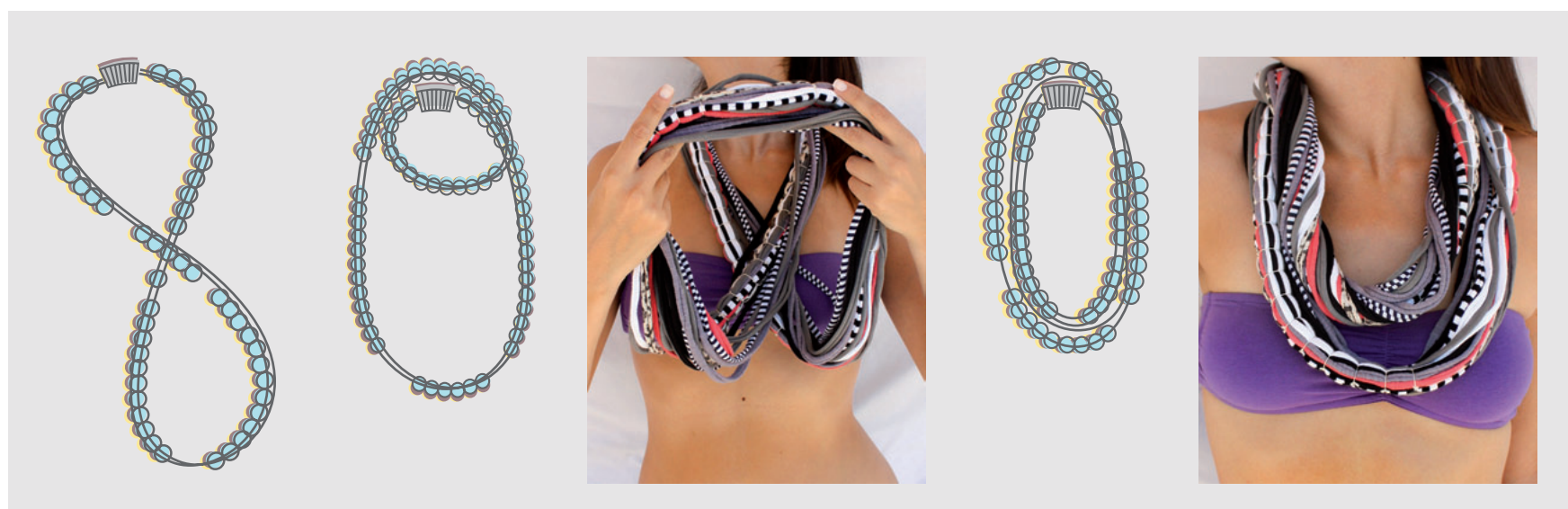
## Knotted collection

The knotted model is designed to be worn in several ways.



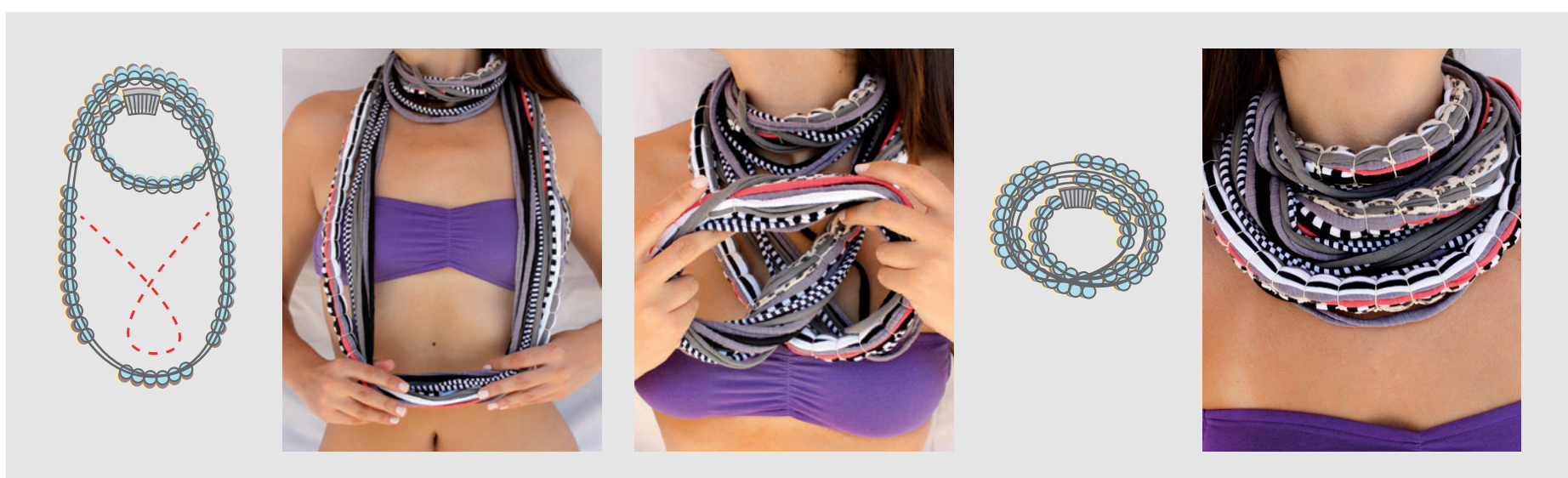
### 1st method:

Hold top end of necklace, then loop once to form of a figure-8. Place over-head and around neck.



### 2nd method:

For a bit more warmth, you can loop the necklace one more time forming a double figure-8 (following the same process from 1st step), creating 3 loops. Once around neck, gently style so that strands remain in place.



## HOW TO TAKE CARE OF YOUR SAAKO?

### 3rd method:

Shape the necklace as seen in the image, then pull one end to form a longer loop. Place the loop around your arm and under your armpit.



### 4th method:

Hold top end of necklace with one hand and bottom end with other hand. Begin to twist and roll the necklace evenly until wound firmly. Do not roll too much; you want the necklace to have some slack when wearing.

Once rolled, use fabric provided in packaging to join ends by tying a simple bowknot behind the neck.

